

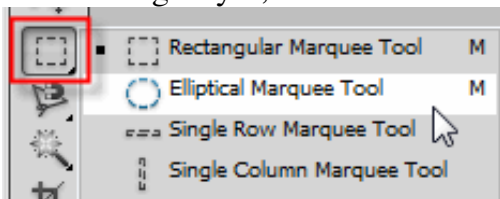
Changing Eye Color

Open the photo you want to use to change the person's eye color. I am using the photo below I found online:

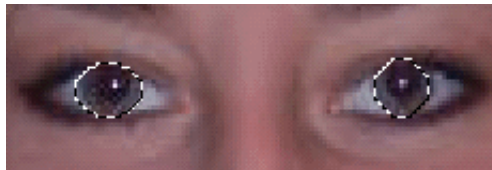


Use the zoom tool  to enlarge the eyes.

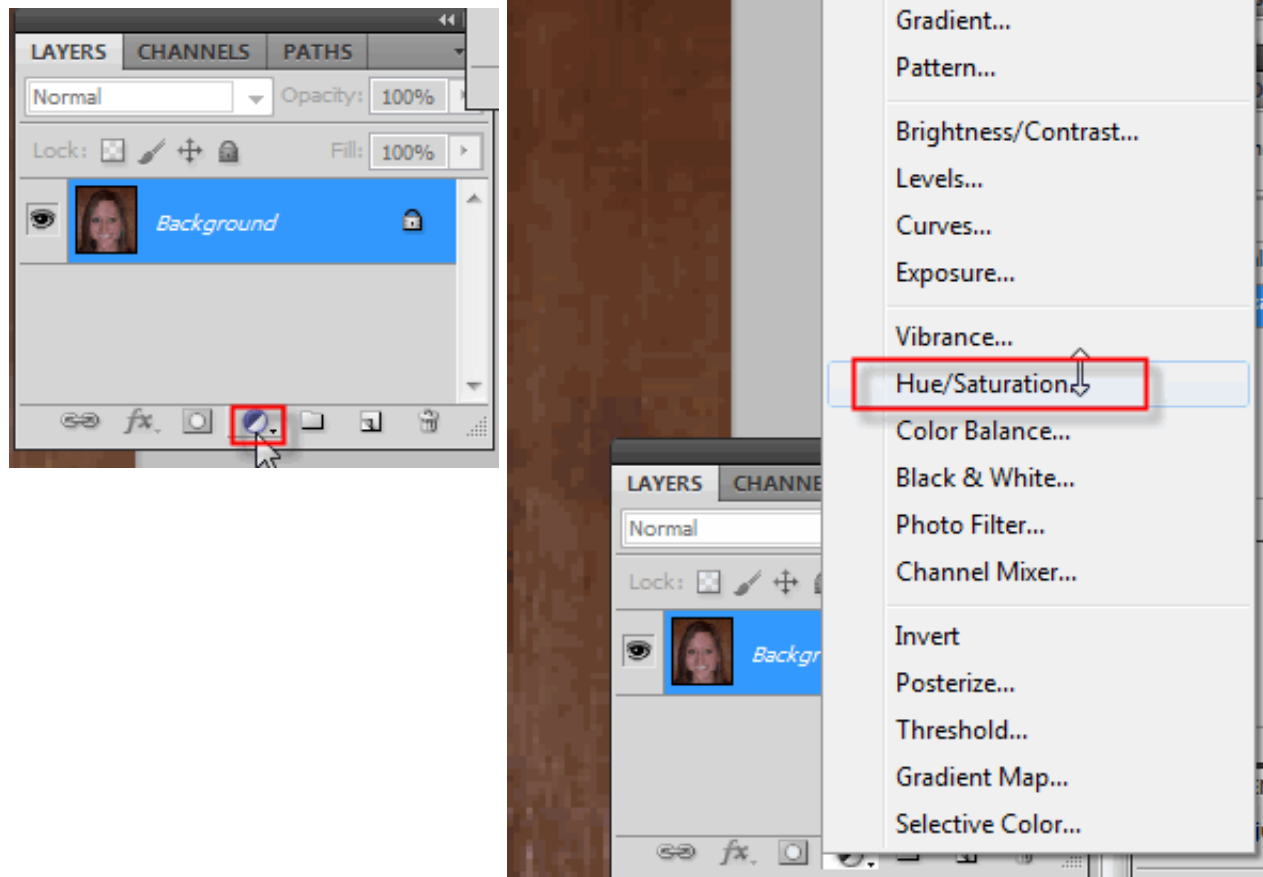
On the image layer, use the Selection brush to select the subject's eyes. I used the elliptical selection tool



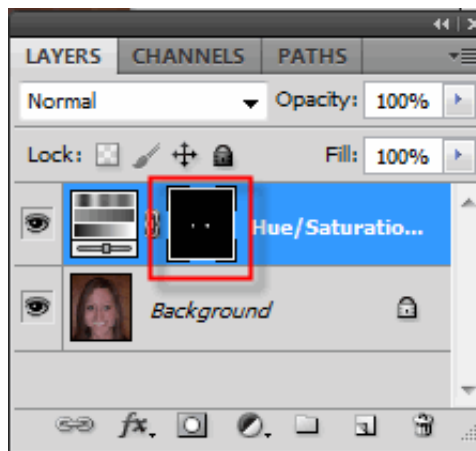
and drag over the left eye first. To make another selection hold down the Shift key while dragging over the right eye. Making a selection will enable you to adjust only the color of the eyes.



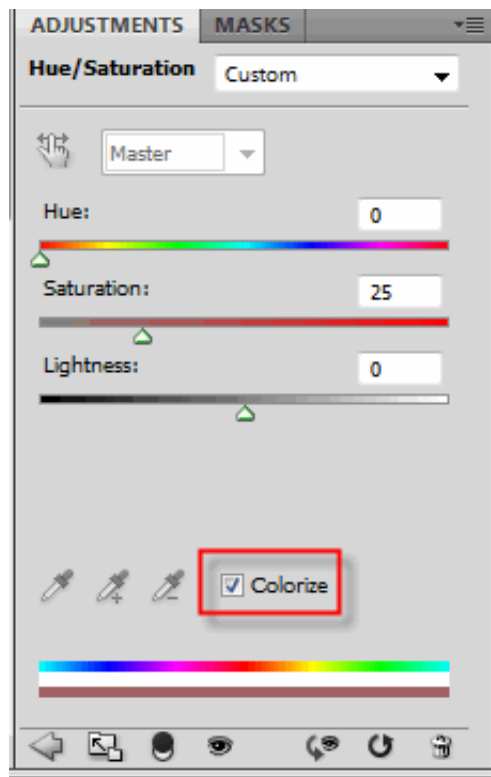
Create a new Hue/Saturation adjustment layer above the image layer by clicking the create new adjustment layer icon on the layers palette and selecting Hue/Saturation from the drop down list.



Notice that the adjustment layer contains a mask filled with black and two white circles where you selected the eyes.



In the Hue/Saturation dialog box, check Colorize.



Play with the Hue, Saturation and Lightness sliders until you find a color you like.

Green Eyes
Hue: 126
Saturation: 28
Lightness: -16



Blue Eyes
Hue: 247
Saturation: 36
Lightness: -17

